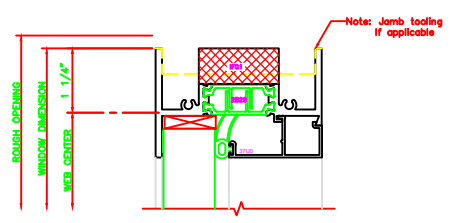
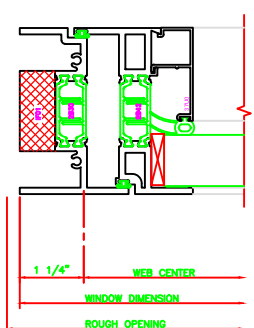


402	JAMB
	325
	FIXED \ PROJECT IN

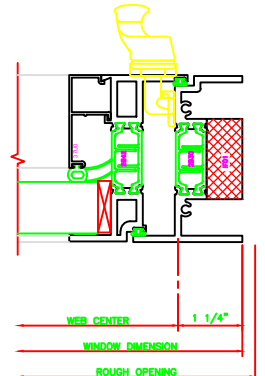
100	HEAD
	325
	FIXED



Note: Jamb tooling if applicable

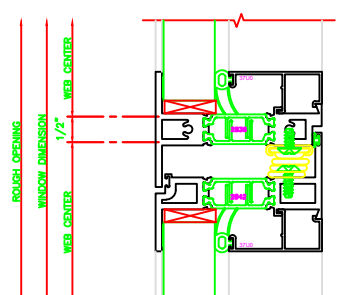


430	JAMB
	325
	CASEMENT IN 4-BAR ARMS

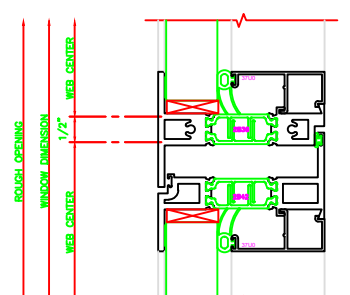


431	JAMB
	325
	CASEMENT IN CAM LOCK

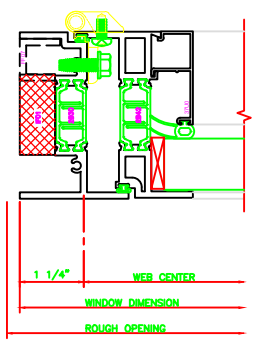
530	MEETING RAIL
	325
	FIXED \ CASEMENT IN 4-BAR ARMS



531	MEETING RAIL
	325
	FIXED \ CASEMENT IN BUTT HINGES

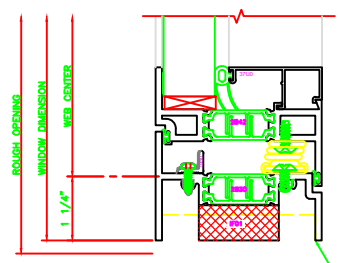


**ERECTOR NOTE:**  
 THE HINGED JAMB FRAME SHALL BE INSTALLED PLUMB. ALL HINGES SHALL BE SECURELY BLOCKED AND ANCHORED TO THE CONDITION THROUGH THE HINGES OR AS CLOSE AS POSSIBLE TO THE HINGES.



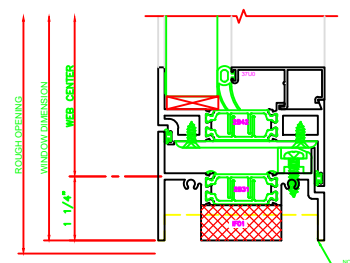
432	JAMB
	325
	CASEMENT IN BUTT HINGES

230	SILL
	325
	CASEMENT IN 4-BAR ARMS



NOTE: JAMB TOOLING if applicable

231	SILL
	325
	CASEMENT IN BUTT HINGES



NOTE: JAMB TOOLING if applicable